

Headley Lane

BISHOPSWORTH

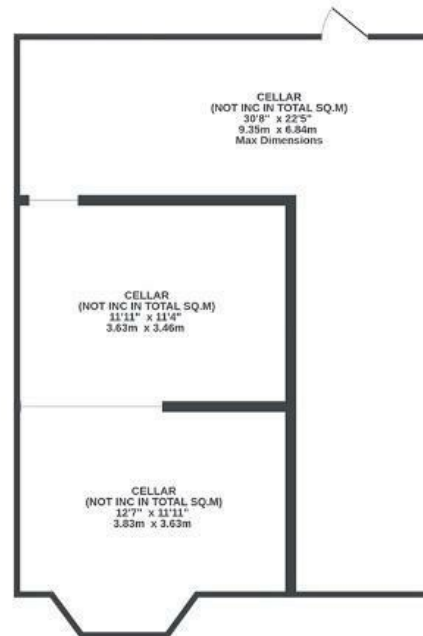
APPROXIMATE FLOOR AREA
118 SQM / 1271 SQFT



GARAGE
0 sq.ft. (0.0 sq.m.) approx.



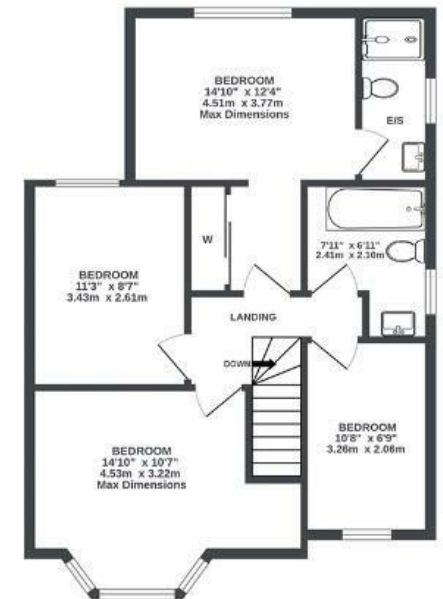
CELLAR
0 sq.ft. (0.0 sq.m.) approx.



GROUND FLOOR
670 sq.ft. (62.2 sq.m.) approx.



1ST FLOOR
601 sq.ft. (55.8 sq.m.) approx.



Illustrations are for reference purposes only, measurements are approximate, not to scale.

Boardwalk

Headley Lane , BRISTOL



£525,000



4 Bedrooms



BS13 7QN



2 Bathrooms

"We have lived in the area for over 20 years. We love the great location, there are beautiful views across The Manor Woods Valley which is a conservation area. It's great walking our dogs here every day. There is great access to open spaces at Ashton Court, Dundry and Chew Valley yet we are less than 15 mins from the City Centre and Bristol Airport. We often pop to North Street for a coffee or evening out."

